

# Environmental Professionals of AZ...

## Let's Talk Stormwater!

The Arizona Pollutant Discharge Elimination System  
**Construction General Permit**  
for Stormwater Discharges to  
AZ's Protected Surface Waters

Rosi Sherrill, AZPDES Permit Writer

February 27, 2024



Clean Air, Safe Water,  
Healthy Land for Everyone



# Construction General Permit (CGP)

## Agenda:

- Brief History of CGP
- Permit Area
- Eligibility
- Current State - Group Brainstorm
- Your Participation

# Construction General Permit (CGP)

History: AZ assumed NPDES Program in 2002; issued AZPDES CGP's in 2003; 2008; 2013; and 2020. Will reissue in 2025.

Permit Area: The State of Arizona, except on Tribal Lands



## Eligibility:

1. A discharge of stormwater off-site to a protected surface water or a MS4; **and**
2. An earth disturbance of 1 acre or more (unless part of common plan).

## Current State:

1. Read the Permit, Fact Sheet, Website.
2. Where is my site located?
3. Is my site eligible?

If NO, CGP is not required.

If YES, CGP is Required.

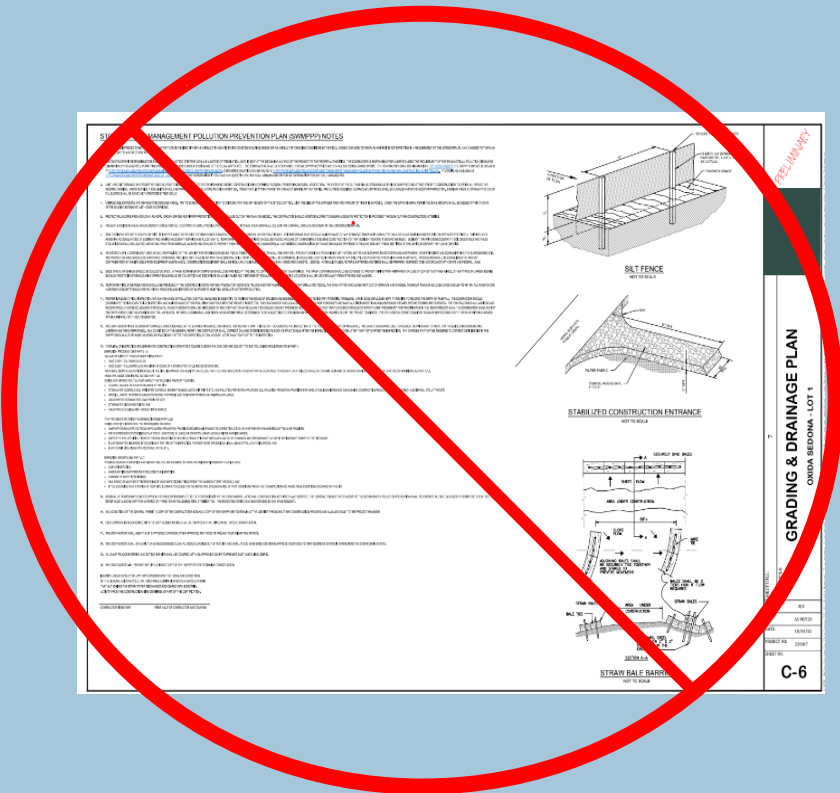


Create an Account;  
Assign User Roles.

A Stormwater Pollution Prevention Plan  
"SWPPP"

**Must** be prepared for every construction site.

A Stormwater Pollution Prevention Plan  
"SWPPP"  
**Must** be prepared for every construction site.



Stormwater Pollution Prevention Plan (SWPPP)

For Construction Activities At:

Insert Site Name  
Insert Site Location/Address  
Insert City, State, Zip Code

Stormwater Pollution Prevention Plan (SWPPP)

Arizona Department of Environmental Quality  
Stormwater Construction General Permit  
Stormwater Pollution Prevention Plan Template

**Introduction**  
The State of Arizona, Arizona Pollutant Discharge Elimination System (AZPDES), Construction General Permit (CGP), permit no. AZG2020-001 authorizes stormwater discharges from large and small construction activities to surface waters either directly or by conveyance, such as a Municipal Separate Storm Sewer System (MS4). The CGP Part 6 includes provisions for the development of this Storm Water Pollution Prevention Plan (SWPPP) to maximize the potential benefits of pollution prevention and sediment and erosion control measures at a construction site. All construction sites are required to prepare a SWPPP. However, an operator only has to submit a copy of the SWPPP for ADEQ review, pay the applicable SWPPP review fee (along with the NOI fee), if any of the following applies:

- Any portion of the construction site is located within 1/4 mile upstream of a receiving water listed as impaired under section 303(d) of the Clean Water Act.
- Any portion of the construction site is located within 1/4 mile upstream of a receiving water listed as an Outstanding Arizona Water (OAW) in A.A.C. R18-11-112(G).
- ADEQ specifically requests a copy of the site SWPPP be submitted for department review. This may occur as part of the NOI evaluation, at any time during permit coverage, in response to an inspection conducted by ADEQ, as part of the Notice of Termination (NOT), and for up to three years after the NOT is submitted.
- A Change of Operator (COR) form is submitted as a result of bankruptcy/ foreclosure.

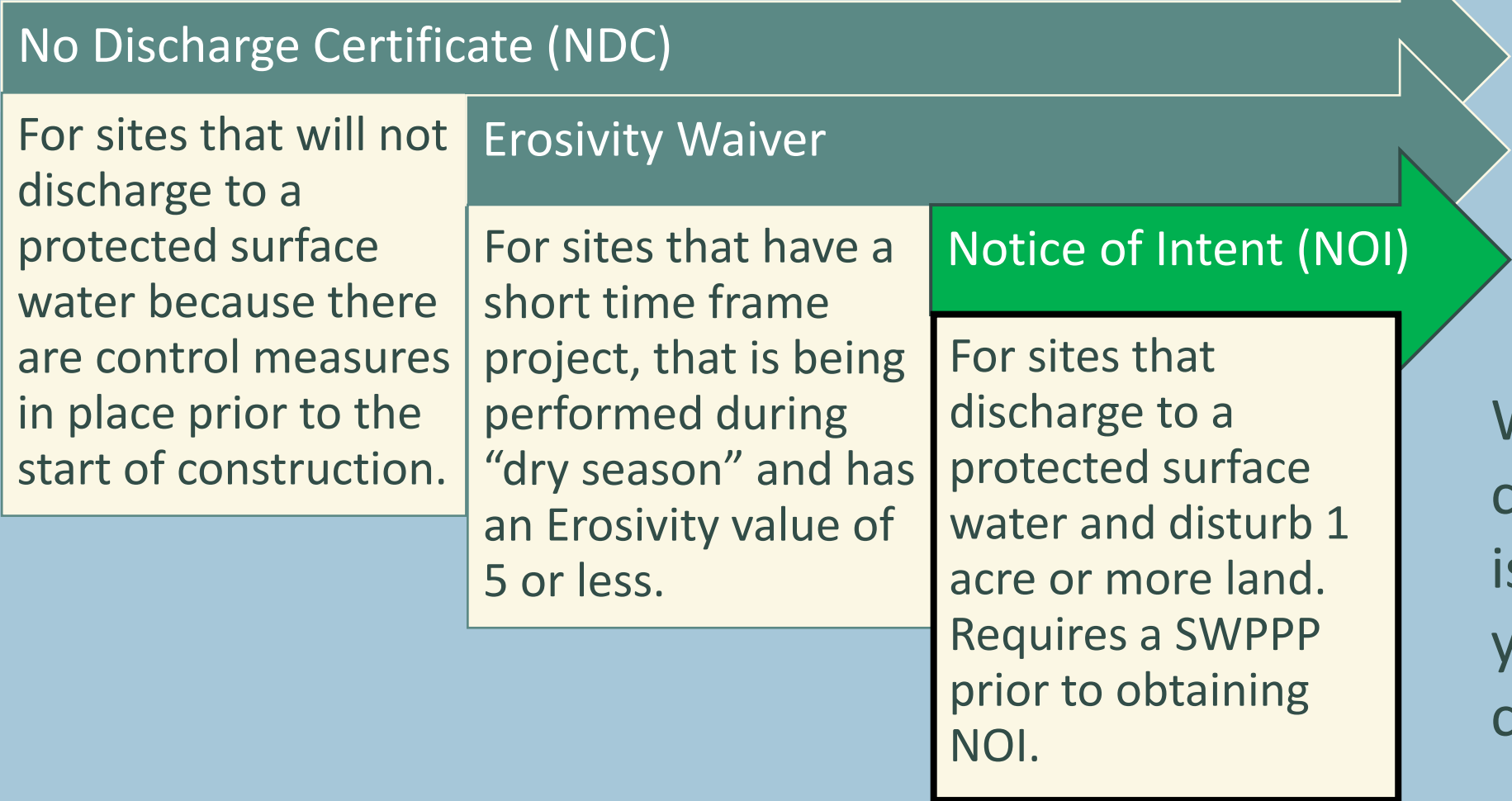


Arizona Department of Environmental Quality  
**Login to myDEQ >**

**Apply for Coverage.**

### Water Quality

- AZPDES De Minimis General Permit (DMGP) NOI
- AZPDES Small Municipal Separate Storm Sewer System General Permit (MS4) – Notice of Intent (NOI) - **New**
- AZPDES Stormwater Construction General Permit (CGP) Notice of Intent (NOI), Erosivity Waiver or No Discharge Certificate (NDC)
- AZPDES Stormwater Multi-Sector General Permit (MSCP) – Notice of Intent (NOI), No Exposure Certification (NEC) and No Discharge



When construction is complete and the site is ‘final’ stabilized, you must terminate coverage in myDEQ.

## Stakeholder Participation:



**Now - Subscribe to email notifications;**

**July/August: Read draft permits;  
Attend in-person or online meetings;  
Provide comments.**



From the main ADEQ site, at the very bottom of the page, click **SUBSCRIBE**.



# Construction General Permit (CGP)

## Discussed:

- ✓ CGP's history
- ✓ Permit area and eligibility
- ✓ How YOU can participate

**Questions/Comments?**

# Thank you!

## Rosi Sherrill

- 602-771-4409
- [sherrill.laurie@azdeq.gov](mailto:sherrill.laurie@azdeq.gov)
- AZPDES Hotline 602-771-1440
- [azpdeshotline@azdeq.gov](mailto:azpdeshotline@azdeq.gov)
- [azpdes@azdeq.gov](mailto:azpdes@azdeq.gov)



---

Clean Air, Safe Water,  
Healthy Land for Everyone

---