

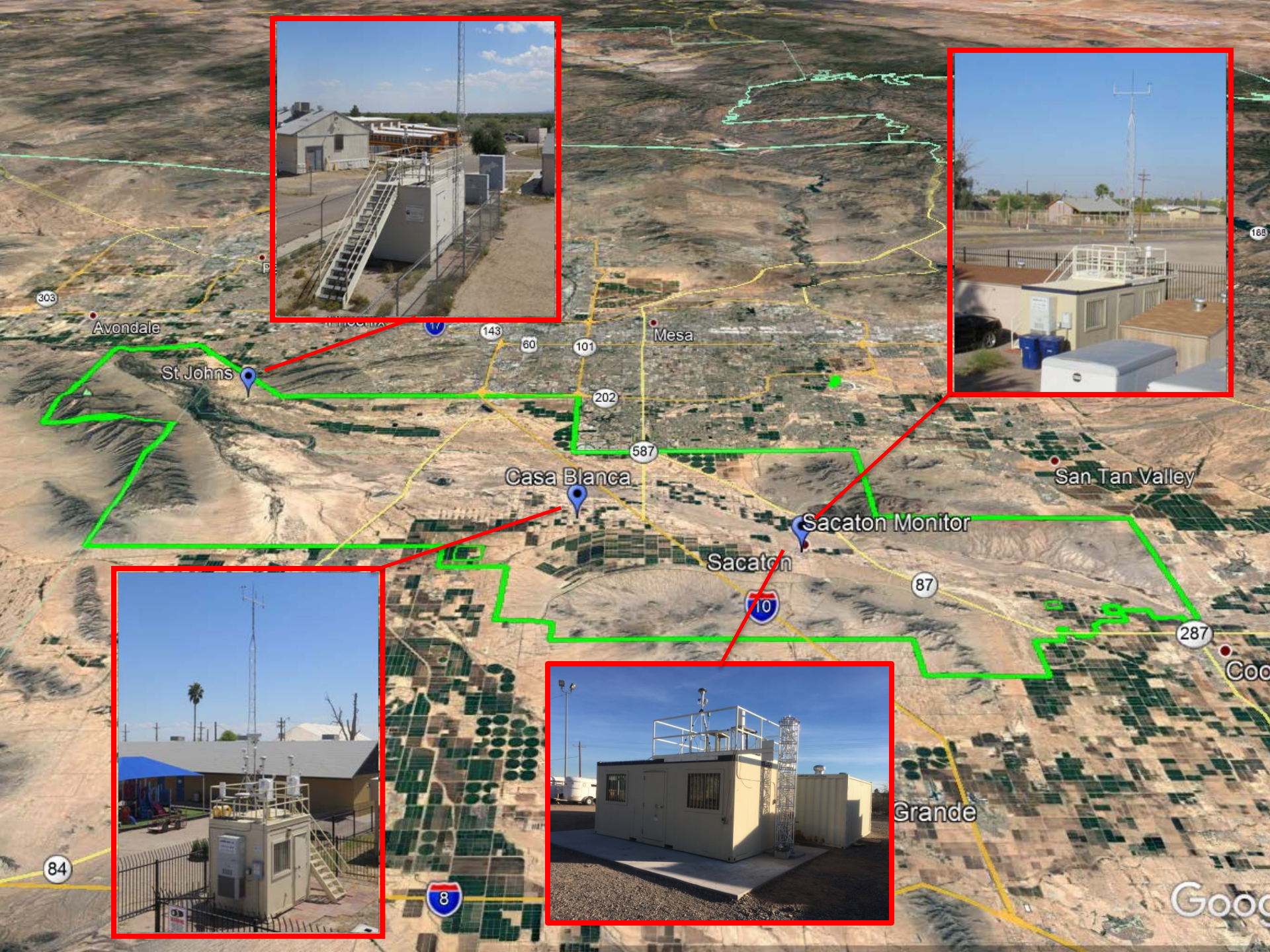


GILA RIVER INDIAN COMMUNITY DEPARTMENT OF ENVIRONMENTAL QUALITY



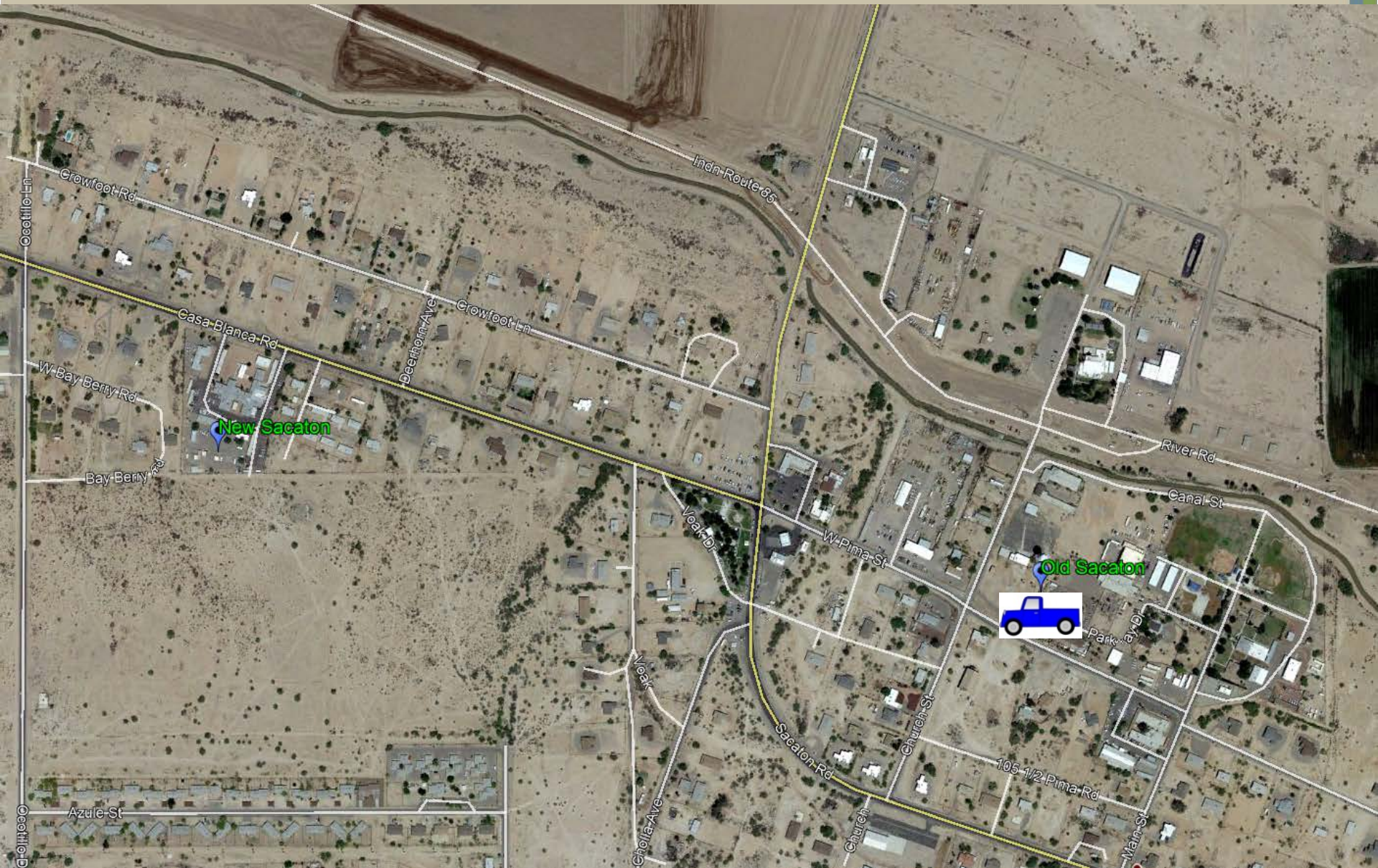
Air Quality Program – 2017 Review

Ryan Eberle, P.E.





Sacaton Monitor Move





Ozone

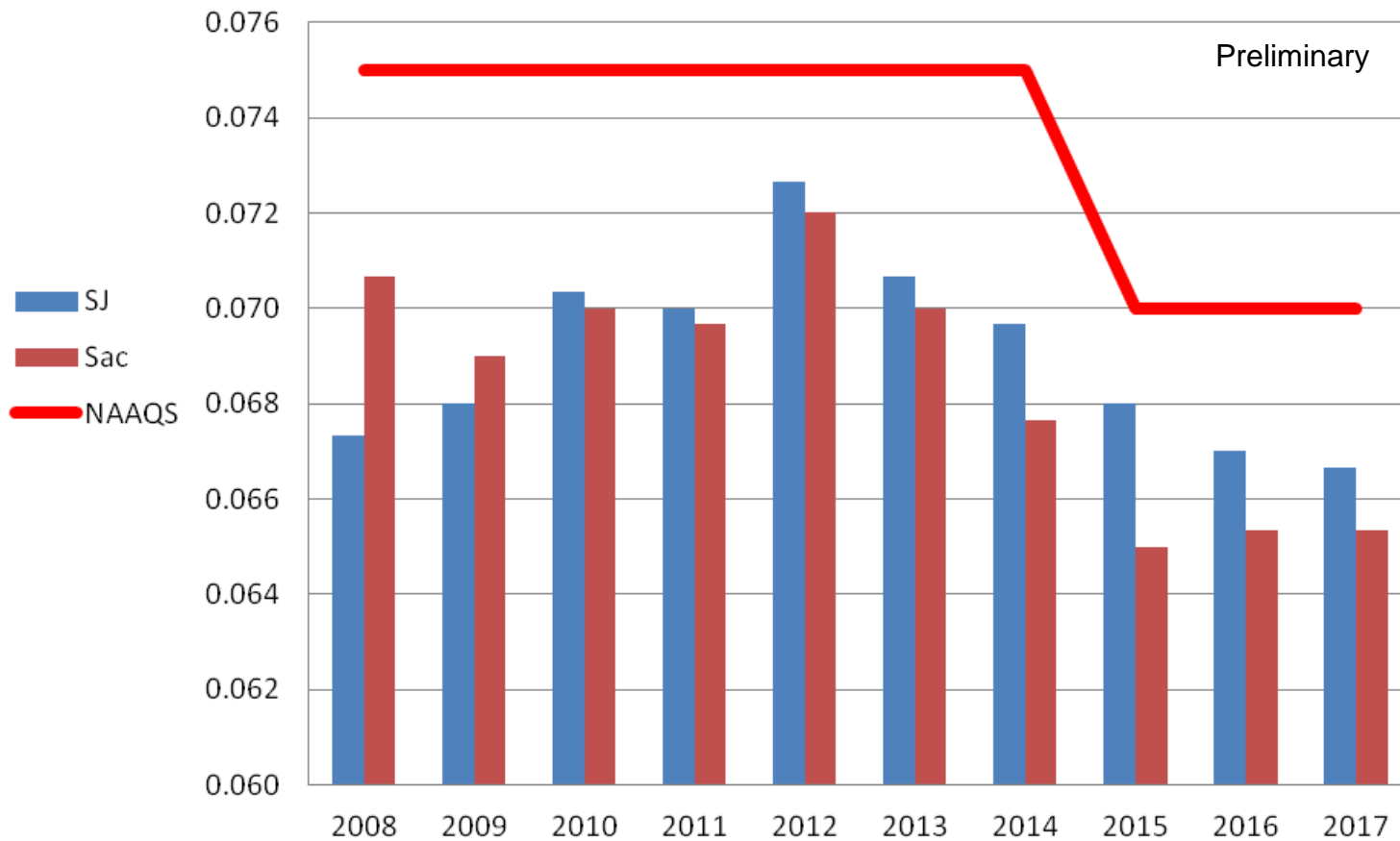
GRIC's Annual 4th Maximum 8 Hour Ozone Average from 2006 to 2017





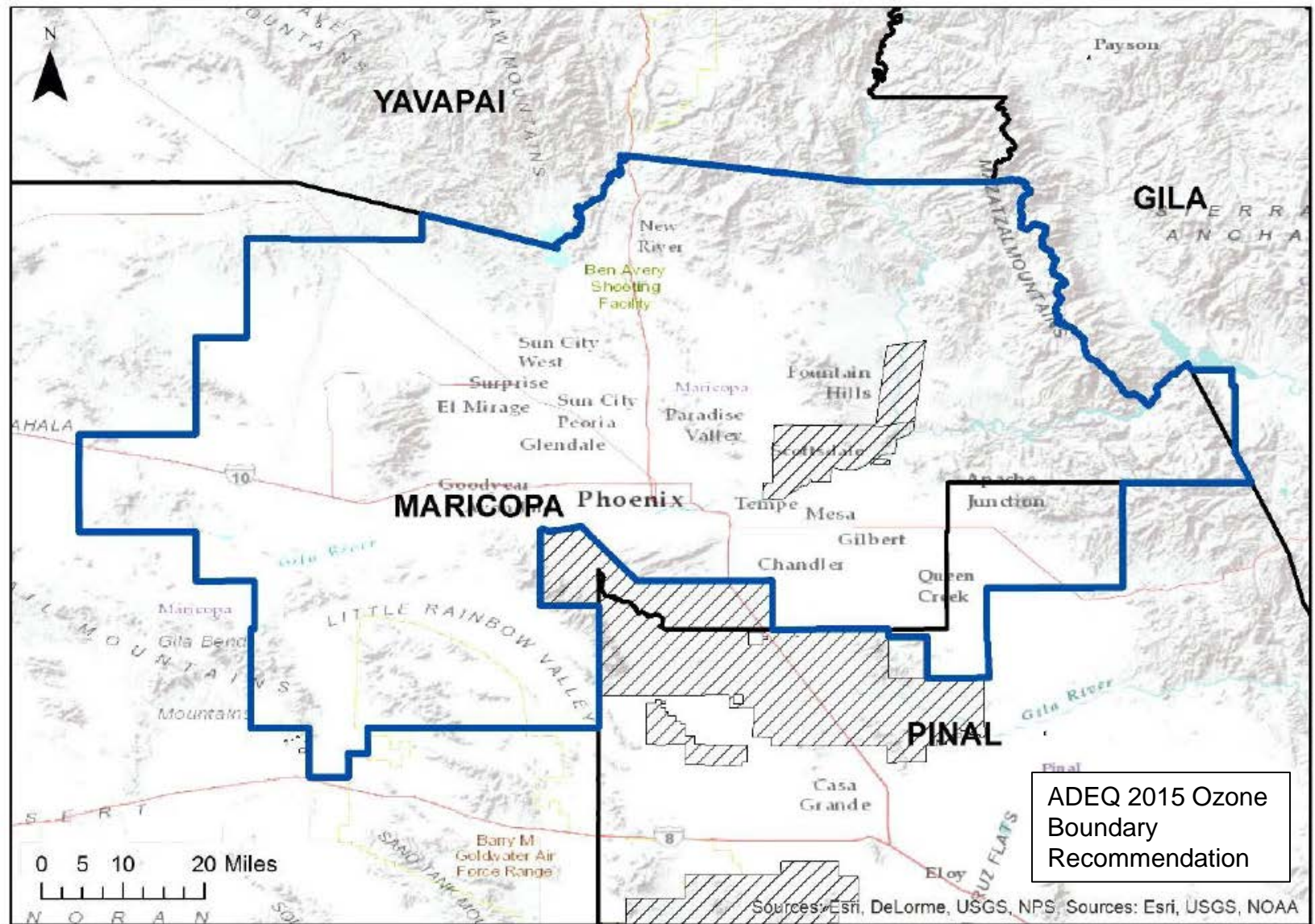
Ozone

GRIC's Annual Design Values of the 8 Hour Ozone NAAQS from 2008 to 2017





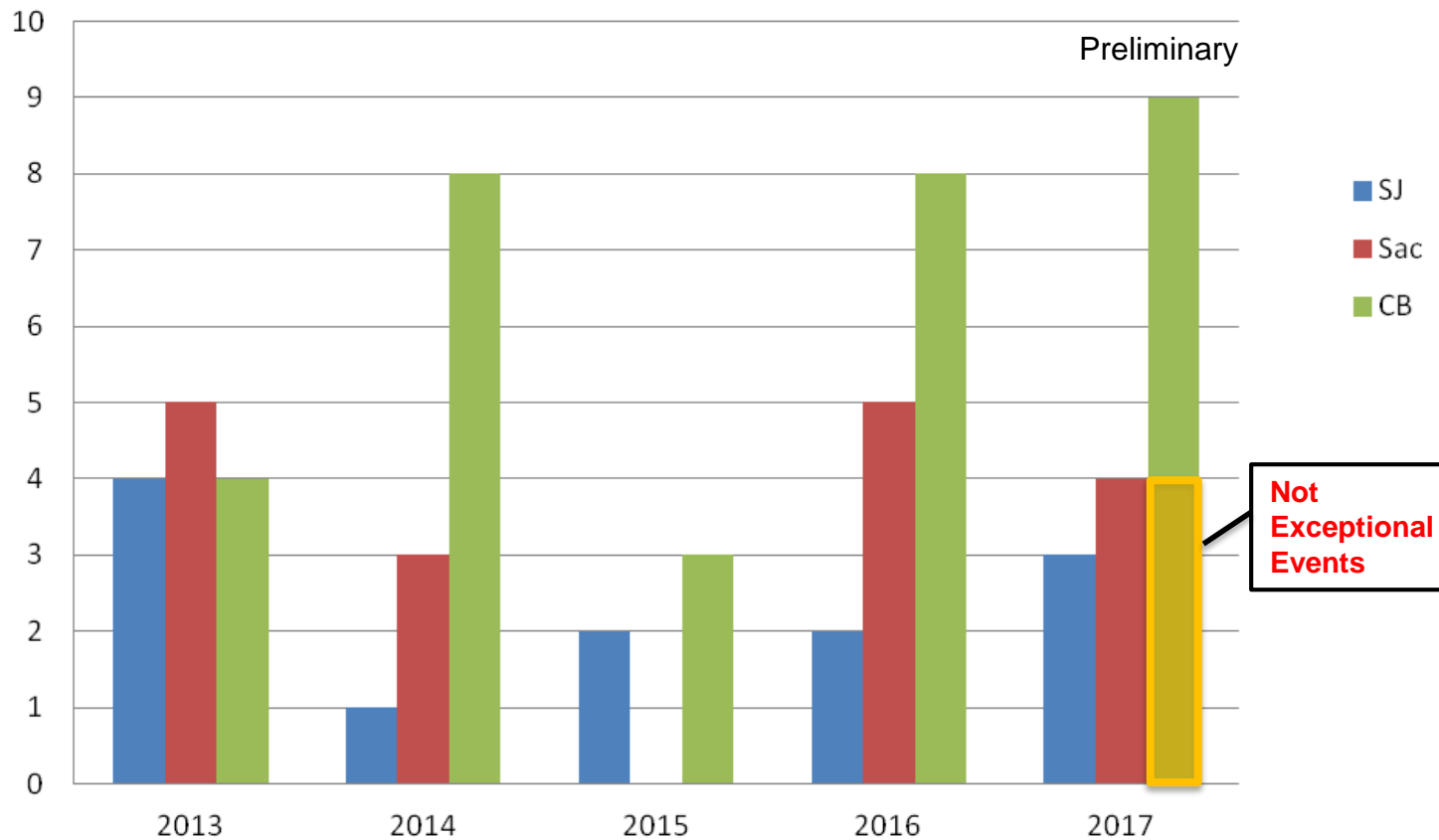
2015 Ozone Designation





PM10

GRIC Number of PM10 Exceedances (All Exceptional Events Unless Noted)



AIR QUALITY ALERT

GILA RIVER INDIAN COMMUNITY

Air Quality Program

On Tuesday, November 28th, 2017, the Casa Blanca ambient air quality monitor recorded a 24-hour average PM10 (dust) concentration in excess of the national health standard. The same monitor is on-track to exceed the standard again today, November 29th. Due to current stagnant and dry weather conditions, the exceedances are probably a result of local activities.

WHAT YOU CAN DO TO HELP REDUCE DUST GENERATION:

- Avoid travel on unpaved roads where possible
- Reduce speed of travel on unpaved roads
 - especially in the Casa Blanca, St. Johns, and Sacaton areas
- Limit earthmoving activities during early morning and evening periods

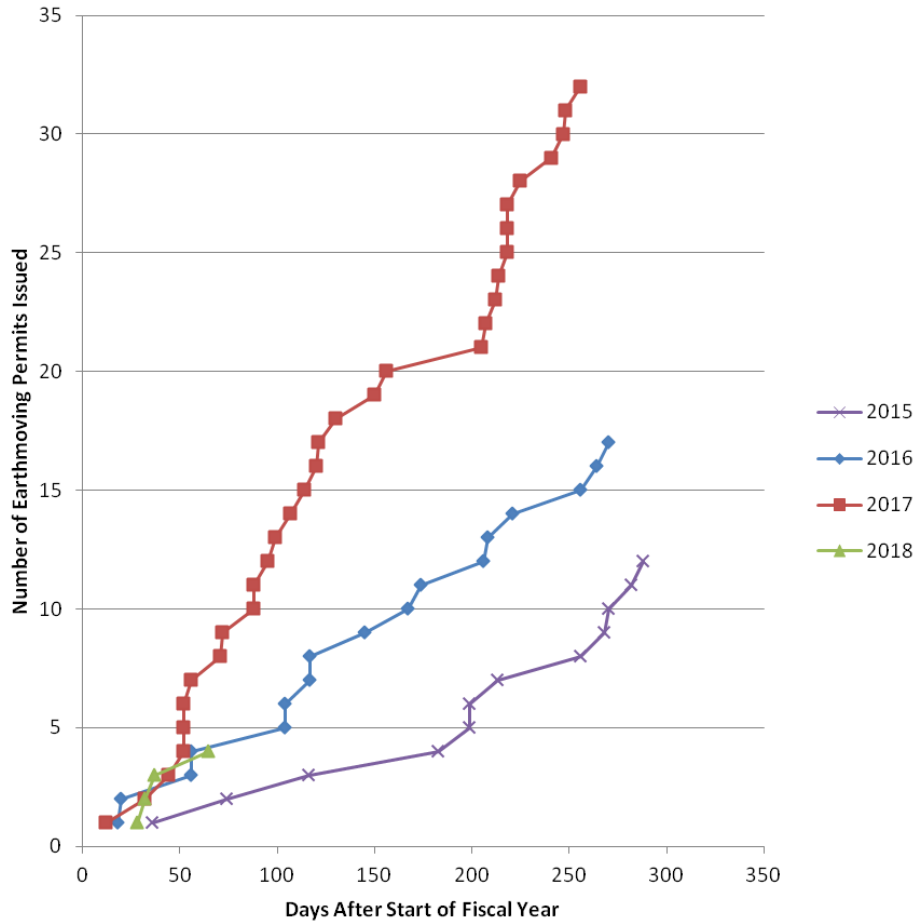
The Air Quality Program and the Department of Environmental Quality appreciate any efforts taken to reduce dust generation throughout the Community during these prolonged periods of warm, dry, and stagnant weather conditions

For questions or comments, please email air@gric.nsn.us

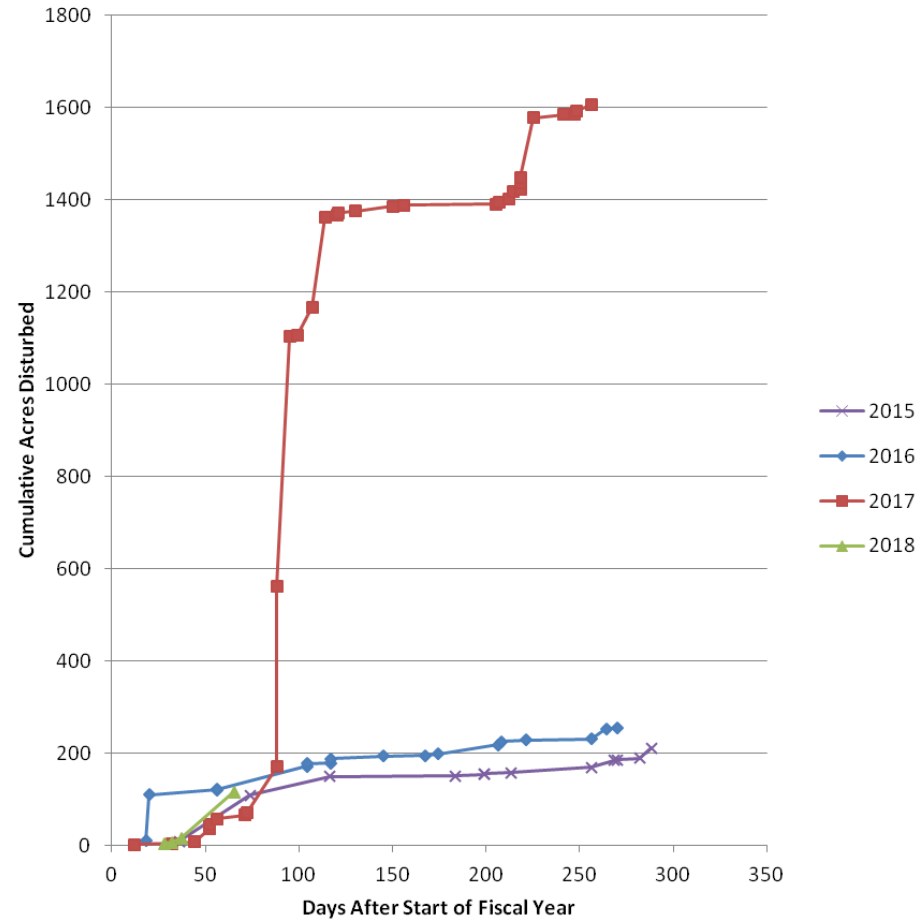


Earthmoving Permits

Earthmoving Permits Issued



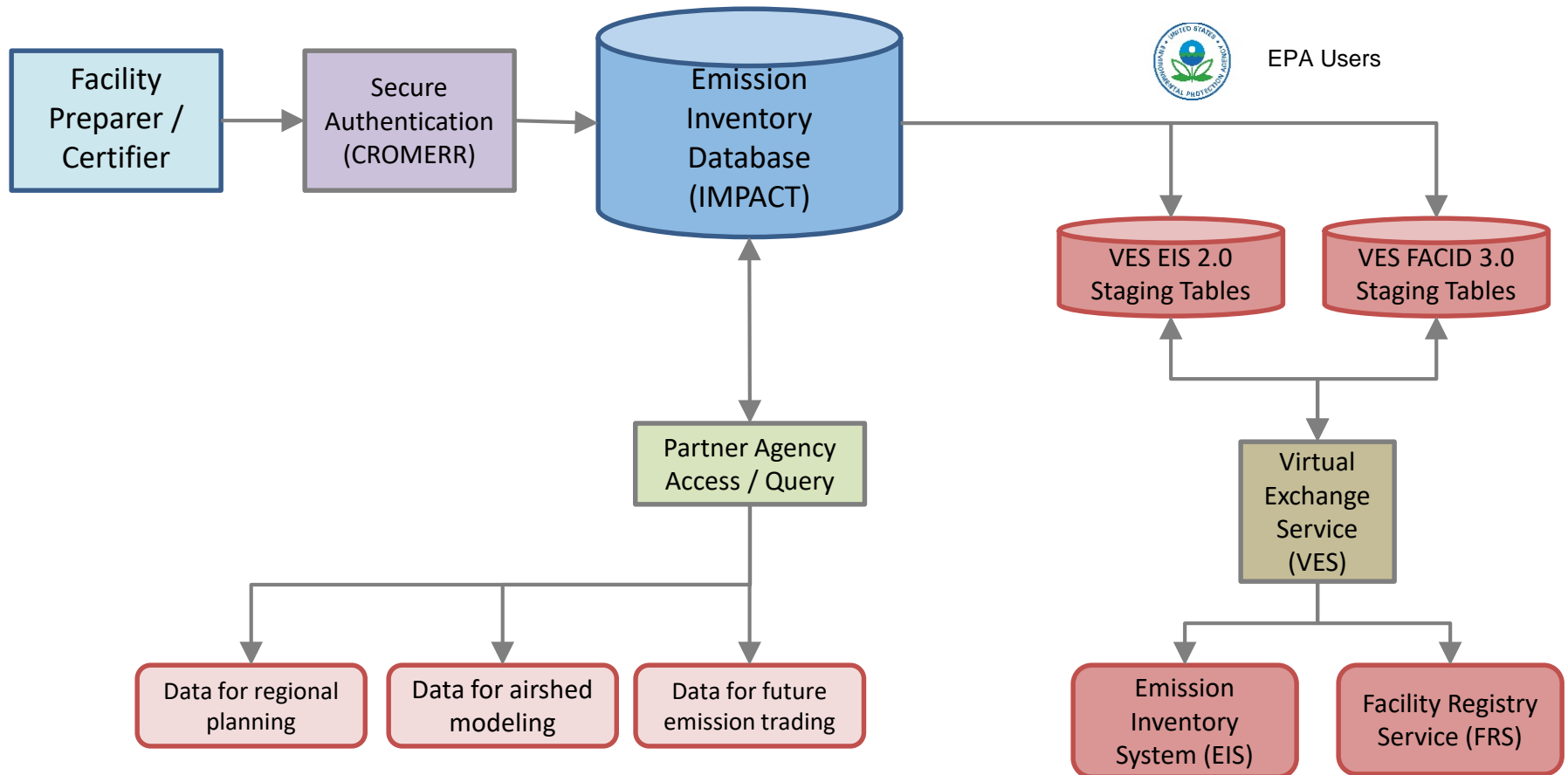
Total Acres Disturbed





Exchange Network Grant

EMISSION INVENTORY DATABASE AND REPORTING





2018 Goals/Projects

APPLICATION FOR NON-TITLE V AIR QUALITY PERMIT


(As required by Title 17, Chapter 9, Part II of the GRIC Air Quality Management Plan)

READ INSTRUCTIONS FIRST. COMPLETE ITEMS 1 THROUGH 20 AND EACH APPLICABLE SECTION A THROUGH Z.

1. BUSINESS NAME:			
2. IS THIS A PORTABLE SOURCE ?		<input type="checkbox"/> YES (IF YES, PROVIDE THE <u>CURRENT</u> SITE INFORMATION IN ITEMS 2a, 3, AND 3a) <input type="checkbox"/> NO (COMPLETE ITEMS 2a, 3, AND 3a)	
2a. ADDRESS OF SITE:	STREET:		
	CITY:	STATE: AZ	ZIP CODE:
3. CONTACT PERSON AT SITE:		TELEPHONE AT SITE:	








Last Reload Time: 9:14:55



MEASUREMENTS

Last Updated: 08:00 PST Thu Mar 8, 2018

<h3>CAMERA</h3>  <p>Bishop Tribe EMO Mar 08 2018 08:01 PST Exp 350</p> <p>Enlarge the current webcam view </p>	<h3>WEATHER / AIR QUALITY</h3> <table border="0"> <tr> <td>Temperature (°F)</td><td>37</td> <td>Wind Speed (mph)</td><td>1</td> </tr> <tr> <td>Relative Humidity (%)</td><td>38</td> <td>Wind Gust (mph)</td><td>2</td> </tr> <tr> <td>Dewpoint (°F)</td><td>14</td> <td>Wind Direction</td><td></td> </tr> <tr> <td>Pressure (mb)</td><td>879</td> <td>Ozone (ppb)</td><td>5</td> </tr> <tr> <td>Precipitation (in)</td><td>0</td> <td>PM2.5 (ug/m3)</td><td>21</td> </tr> <tr> <td>Solar Radiation (W/m²)</td><td>0.39</td> <td>PM10 (ug/m3)</td><td>29</td> </tr> </table> <p>Click on the white data boxes above to obtain a graph</p>	Temperature (°F)	37	Wind Speed (mph)	1	Relative Humidity (%)	38	Wind Gust (mph)	2	Dewpoint (°F)	14	Wind Direction		Pressure (mb)	879	Ozone (ppb)	5	Precipitation (in)	0	PM2.5 (ug/m3)	21	Solar Radiation (W/m ²)	0.39	PM10 (ug/m3)	29
Temperature (°F)	37	Wind Speed (mph)	1																						
Relative Humidity (%)	38	Wind Gust (mph)	2																						
Dewpoint (°F)	14	Wind Direction																							
Pressure (mb)	879	Ozone (ppb)	5																						
Precipitation (in)	0	PM2.5 (ug/m3)	21																						
Solar Radiation (W/m ²)	0.39	PM10 (ug/m3)	29																						



Questions?

Ryan Eberle, P.E.

Air Quality Program Manager

Gila River Indian Community

520-796-3781

ryan.eberle@gric.nsn.us

www.gricdeq.org



RYAN EBERLE

Air Quality Program Manager
Gila River Indian Community's
Department of Environmental
Quality

602.382.6000

Ryan.Eberle@gric.nsn.us

17

- Ryan Eberle is the Air Quality Program Manager for the Gila River Indian Community's Department of Environmental Quality located south of the Phoenix metropolitan area.
- He earned his Bachelor of Science in Environmental Engineering from Northern Arizona University, and is a registered Professional Engineer in the state of Arizona with over 18 years of environmental and engineering experience in both private and public sectors.
- In his current role, Ryan leads a staff of four air quality professionals who write air quality permits, conduct compliance and enforcement activities, and run three ambient air quality monitoring stations for the Community.